

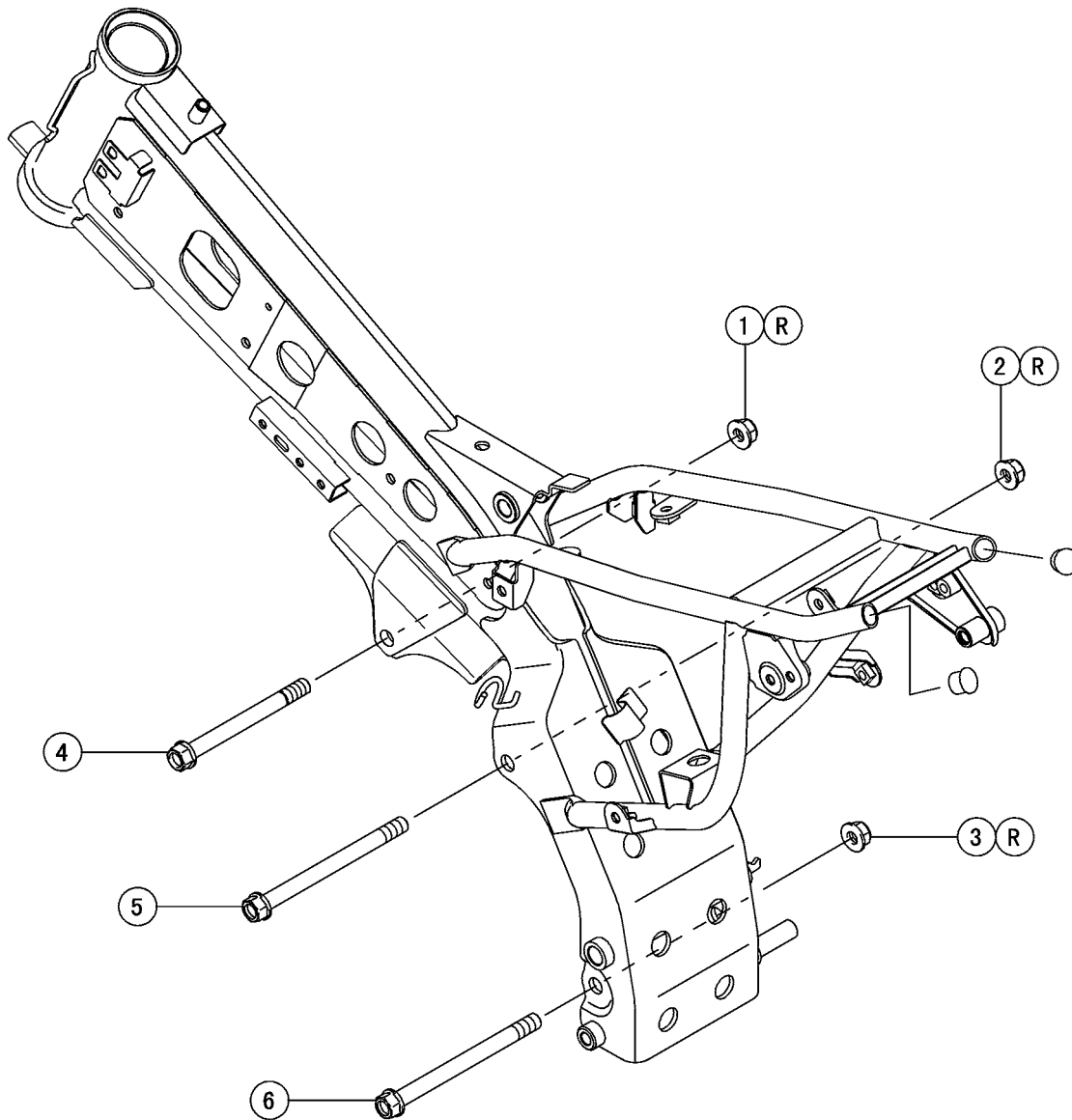
Engine Removal/Installation

Table of Contents

Exploded View.....	7-2
Special Tool	7-4
Engine Removal/Installation	7-5
Engine Removal.....	7-5
Engine Installation.....	7-6

7-2 ENGINE REMOVAL/INSTALLATION

Exploded View



ENGINE REMOVAL/INSTALLATION 7-3

Exploded View

No.	Fastener	Torque			Remarks
		N·m	kgf·m	ft·lb	
1	Upper Engine Mounting Nut	54	5.5	40	R
2	Middle Engine Mounting Nut	54	5.5	40	R
3	Lower Engine Mounting Nut	54	5.5	40	R

4. Upper Engine Mounting Bolt (L = 105)

5. Middle Engine Mounting Bolt (L = 125)

6. Lower Engine Mounting Bolt (L = 125)

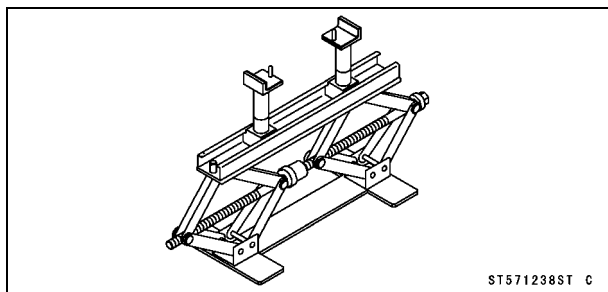
R: Replacement Parts

7-4 ENGINE REMOVAL/INSTALLATION

Special Tool

Jack:

57001-1238



Engine Removal/Installation

Engine Removal

- Squeeze the brake lever slowly and hold it with a band [A].

⚠ WARNING

Motorcycle may fall over unexpectedly resulting in an accident or injury. Be sure to hold the front brake when removing the engine.

NOTICE

Be sure to hold the front brake when removing the engine, or the motorcycle may fall over. The engine or the motorcycle could be damaged.

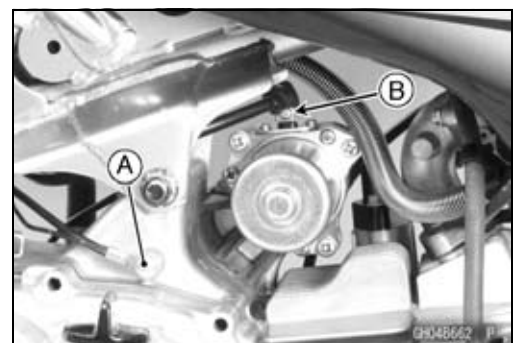
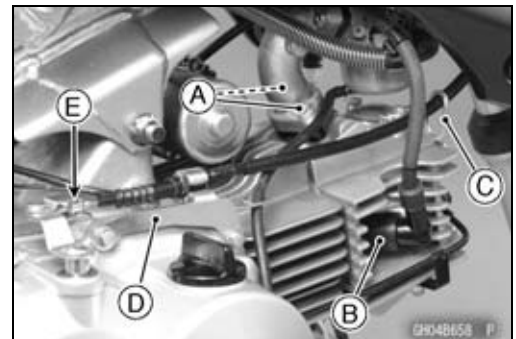
- Drain the engine oil (see Engine Oil Change in the Periodic Maintenance chapter).
- Remove:
 - Side Covers (see Side Cover Removal in the Frame chapter)
 - Engine Guard (see Engine Guard Removal/Installation in the Frame chapter)
 - Muffler (see Muffler Removal in the Engine Top End chapter)
 - Shift Pedal (see Shift Pedal Removal in the Crankshaft/Transmission chapter)
 - Kick Pedal (see Kick Pedal Removal in the Crankshaft/Transmission chapter)
 - Battery Negative (-) Cable (see Battery Removal in the Electrical System chapter)

- Remove:
 - Intake Pipe Bolts [A]
 - Insulator
 - Spark Plug Cap [B]

KLX110D Models

- Remove:
 - Clamp [C]
 - Clutch Cable Holder [D]
 - Clutch Cable Lower End [E]

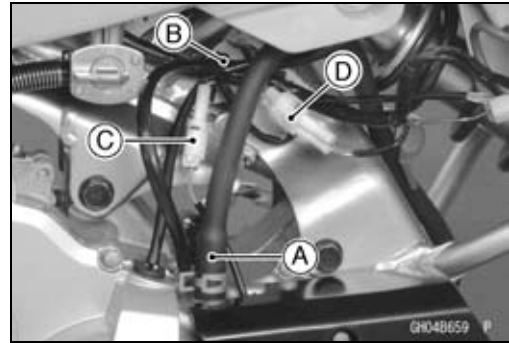
- Remove:
 - Engine Ground Lead Terminal [A]
 - Starter Motor Cable [B]



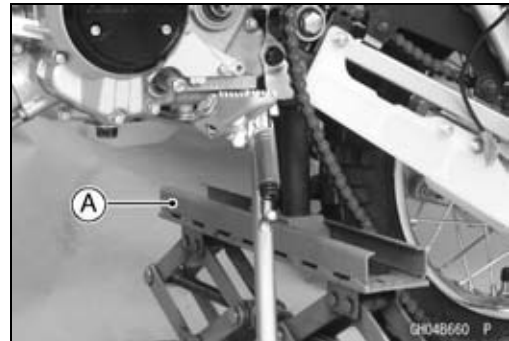
7-6 ENGINE REMOVAL/INSTALLATION

Engine Removal/Installation

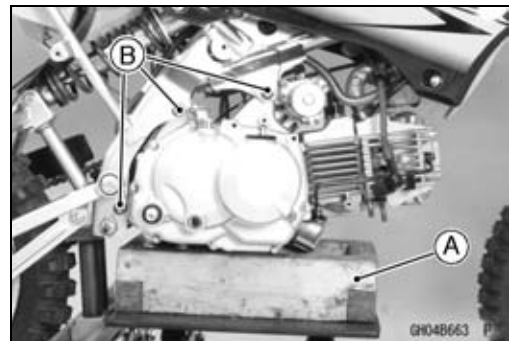
- Remove the breather tube [A].
- Free the leads from the clamp [B].
- Disconnect:
 - Gear Position Switch Lead Connector [C]
 - Alternator Lead Connector [D]
- Remove the engine sprocket (see Engine Sprocket Removal in the Final Drive chapter).



- Support the rear part of the frame on the jack.
 - **Special Tool - Jack [A]: 57001-1238**
- Remove the footpeg bracket (see Footpeg Bracket Removal in the Frame chapter).
- Remove the brake pedal (see Brake Pedal and Rod Removal in the Brakes chapter).



- Support the engine with a suitable stand [A].
- Remove the engine mounting nuts [B] and bolts, and dismount the engine.



Engine Installation

- Support the engine with a suitable stand and set it at the correct position.
- Install the lower [A], middle [B] and upper [C] engine mounting bolts from left side of the engine.
- Replace the engine mounting nuts with new ones.
- Tighten the engine mounting nuts following the tightening sequence.

Torque - Lower Engine Mounting Nut: 54 N·m (5.5 kgf·m, 40 ft·lb)

Middle Engine Mounting Nut: 54 N·m (5.5 kgf·m, 40 ft·lb)

Upper Engine Mounting Nut: 54 N·m (5.5 kgf·m, 40 ft·lb)

- Install the removed parts (see appropriate chapters).
- Run the cables, hoses and leads according to the Cable, Wire and Hose Routing section in the Appendix chapter.
- Fill the engine oil (see Engine Oil Change in the Periodic Maintenance chapter).
- Adjust the drive chain (see Drive Chain Slack Adjustment in the Periodic Maintenance chapter).

